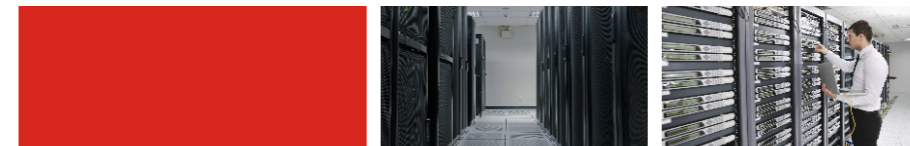




ASSURED TEL LINE BATTERIES



- AGM Batteries
- GEL Batteries
- Flooded Batteries
- Temperature Tolerant Batteries
- High Cycling Tubular Batteries
- 48V Lithium Iron Phosphate Batteries



North America Corporate Office:

Leoch Battery Corporation
19751 Descartes, Unit A, Foothill Ranch, CA 92610
Tel: 949-588-5853
E-mail: sales@leoch.us

North American Sales Office:

1395 South Marietta Parkway Bldg. 400, Suite 108 Marietta, GA 30067
Tel: 678-403-1083
E-mail: sales@leoch.us

©2018 LEOCH. All rights reserved.
Trademarks and logos are the property of LEOCH and its affiliates unless otherwise noted.
Subject to revisions without prior notice.



Publication No: LB-TEL-PB-US-V3.0-201807



Modular Battery System LMB Series - AGM Batteries

Features & Benefits

- AGM - Capacity range 300 to 2000Ah.
- Highly controlled Lead calcium-tin alloy, starting from virgin lead.
- Special Recombinant AGM and valve regulated technology design minimizes gassing which extends life.
- Flame Retardant polypropylene jar and covers to UL94V-0 and >28% LOI.
- Module design allows for easy, fast installation, uniform and consistent compression, along with built in cell protection.
- No water additions for the life of the battery.
- Non-hazardous for rail and road transportation.
- UL Recognized, IEC Certified, & IATA Approved for Air Freight.

Specifications

Battery Module				Modular System Rack Configuration***												
Module	Cells per Jacket	Nominal Voltage (V)	Capacity* (C8, Ah)	Cell & System Jacket Weight per Cell (lbs)	System Depth (inch)	24VDC		24VDC		24VDC		48VDC		48VDC		
						A: (2W x 6H)		B: (3W x 4H)		C: (4W x 3H)		D: (3W x 8H)		E: (4W x 6H)		
						Width (inch)	Height (inch)**	Width (inch)	Height (inch)**	Width (inch)	Height (inch)**	Width (inch)	Height (inch)**	Width (inch)	Height (inch)**	
LMB 4-300	2	4	300	106.3	139	13.74	15.55	57.48	/	/	26.18	30.51	/	/	26.18	55.91
LMB 4-510	2	4	510	165.8	207	20.71	15.55	57.48	/	/	26.18	30.51	/	/	26.18	55.91
LMB 4-600	2	4	595	194.0	240	20.71	18.70	57.48	/	/	32.2	30.51	/	/	32.2	55.91
LMB 2-850	1	2	850	136.2	161	20.71	22.17	57.48	30.83	38.98	39.61	30.51	30.83	72.83	39.61	55.91
LMB 2-1000	1	2	1000	154.1	181	23.50	22.17	57.48	30.83	38.98	39.61	30.51	30.83	72.83	39.61	55.91
LMB 2-1105	1	2	1105	170.0	198	20.71	26.57	57.48	37.44	38.98	48.43	30.51	37.44	72.83	48.43	55.91
LMB 2-1200	1	2	1200	181.2	210	23.50	25.08	57.48	35.20	38.98	45.43	30.51	35.2	72.83	45.43	55.91
LMB 2-1300	1	2	1300	192.0	221	23.50	26.57	57.48	37.44	38.98	48.43	30.51	37.44	72.83	48.43	55.91
LMB 2-1500	1	2	1500	236.3	265	22.36	25.08	71.65	35.20	48.43	45.43	37.6	35.20	91.73	45.43	70.08
LMB 2-1600	1	2	1600	238.3	271	23.50	31.14	57.48	44.29	38.98	57.56	30.51	44.29	72.83	57.56	55.91
LMB 2-2000	1	2	2000	311.1	344	22.36	31.14	71.65	44.29	48.43	57.56	37.60	44.29	91.73	57.56	70.08

*Nominal capacity: 8 hour rate to 1.75Vpc @77°F(25°C).

**Rack Height without terminal box. For total height, add 5.04" for terminal box height.

***Configuration are in number of cells. Therefore, A, B, C configuration are 24V modular system and D, E configuration are 48V modular

Modular Rack

LMB (Vol)-(Cap)-(Conf.)

Vol ---- System Voltage

Cap --- System Capacity

Conf. - Rack Configuration

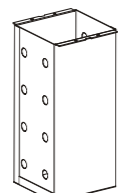
(A, B, C are 24V configuration.)

(D, E are 48V configuration.)

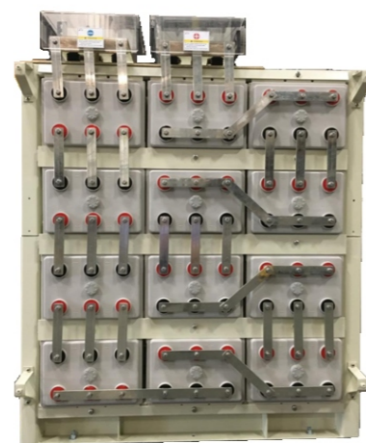
Example Rack:

Modular Rack System

LMB24-2000-B



Steel Jacketed Cells



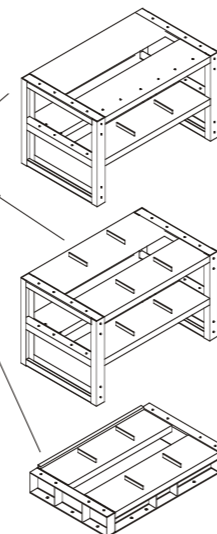
Easy 1, 2, 3 assembly:

3. Top Modular frame.
2. Bottom Modular frame.
1. Base Deck frame.

Faster Installs.



(One Shield Design)



Pure Lead Punched Plate PLH Series - AGM Batteries

Features & Benefits

- Capacity 40 to 210 AH
- Pure Lead Punched grids, for consistent performance
- Lower Float Current for long life
- Premium ABS+PC (FR) jar & cover to UL94V-0 & >28% LOI
- Highly automated COS & TTP welding
- 20 Year Design Life for Critical Telecom Applications
- Low internal resistance with 2-year shelf life.
- 100% Initial Capacity, Fast Charging Acceptance
- Large top post & brass front terminal adapter
- Front accessible gas port for air tight enclosures
- Forward sliding safety shield for zero overhead space required.
- UL Recognized, IEC Certified, & IATA Approved for Air Freight



Pure Lead Punched plate for extremely long life

Applications

Critical Standby battery back-up applications where the energy is stored in reserve in batteries and ready for use whenever needed. Typical critical battery back-up applications are:

- UPS(High rate application)
- Telecom(long duration float application)
- Utility Switchgear(step loads, peak power shaving, frequency regulation, and distributed energy applications)
- Renewable Energy(cyclic solar/wind energy storage)
- Emergency Lighting(float applications)
- Industrial Controlled Power
- Railway&Aircraft signal back-up support

Specifications

Model Number	Nominal Voltage (V)	Capacity* (C8, Ah)	DIMENSION						Weight		Terminal	
			Length		Width		Height		lbs	kg	Top Post	FT Adapter
Top Terminal												
PLH100	12	96	13.46	342	6.89	175	8.39	213	68.8	31.2	M6 Insert Std. (Opt M8 Insert)	/
Front Terminal												
PLH40FT(A)	12	38	11.76	298.7	3.82	97	7.24	184	27.6	12.5	T11 (M8 Insert)	Standard M6 Post (Optional M8 available)
PLH62FT(A)	12	62	11.76	298.7	3.82	97	10.51	267	43.0	19.5		
PLH90FT(A)	12	90	15.96	405.4	4.25	108	11.30	287	63.3	28.7		
PLH100FT(A)	12	100	15.96	405.4	4.25	108	11.30	287	67.9	30.8		
PLH110FT(A)	12	110	22.01	559	4.92	125	8.94	227	80.5	36.5		
PLH150FT(A)	12	150	22.01	559	4.92	125	10.91	277	105.8	48.0		
PLH170FT(A)	12	170	22.01	559	4.92	125	12.60	320	119.5	54.2		
PLH190FT(A)	12	190	22.01	559	4.92	125	12.60	320	127.0	57.6		
PLH210FT(A)	12	210	22.01	559	4.92	125	12.91	328	135.8	61.6		

*Nominal capacity: 8 hour rate to 1.75Vpc @77°F(25°C).

■ Mono-Bloc LOP (Leoch Outside Plant) Series

LOP Top & Front Terminal AGM Batteries for Telecom & Utility Control Applications.

Designed for Long Life outside plant batteries for Telecommunication power back-up, DC power supply, Wireless & Wireline Huts, Mobile Communication Trailers, Utility Switchgear & Control. Excellent for APU (Aux Power Units).



Standard ABS-FR jar



Optional ABS/PC-FR Jars

Features & Benefits

- Capacity 60 to 180 AH
- Low specific gravity for longer life in outside plant applications
- Virgin lead is used to make plates and paste alloy for long life.
- Copper alloy terminal insert for low resistance
- Solid ABS Flame Retardant jars to UL94V-0 & >28%LOI (standard)
- High heat ABS/PC-FR for non temp controlled environments (optional).
- Designed for Critical Telecom Applications - 10yr design life
- 100% initial capacity.
- UL recognized, IEC60896-21 22 certified and IATA Approved for Air Freight.

Specifications

Model Number	Nominal Voltage (V)	Capacity(Ah)		DIMENSION						Weight		Terminal	
		C8*	C20**	Length		Width		Height		lbs	kg	Top Post	FT Adapter
Top Terminal Batteries													
LOP6-60FR	6	57	64	7.28	185	4.41	112	8.07	205	20.3	9.2	T2(F2 Tab)	NA
LOP12-38FR	12	36	40	7.76	197	6.50	165	6.69	170	29.3	13.3	T6(M6 Insert)	
LOP12-40FR	12	36	40	10.04	255	3.82	97	7.99	203	27.8	12.6	T7(M6 Insert)	
LOP12-52FR	12	52	59	9.02	229	5.43	138	8.27	210	39.2	17.8	T6(M6 Insert)	
LOP12-88FR	12	88	96	12.05	306	6.61	168	8.19	208	60.4	27.4	T6(M6 Insert)	
LOP12-134FR	12	134	150	13.58	345	6.77	172	10.79	274	91.7	41.6	T11(M8 Insert)	
Front Terminal Batteries													
LOP12-90FT-FR	12	90.4	99	15.51	394	4.33	110	11.26	286	70.5	32.0	M6 Insert	M6 Insert
LOP12-135FT-FR	12	136	150	21.69	551	4.33	110	11.34	288	101.0	45.8	M8 Insert	M8 Insert
LOP12-180FT-FR	12	180.8	198	22.05	560	4.96	126	12.60	320	131.2	59.5	M8 Insert	M8 Insert

*C8: 8 hour rate to 1.75Vpc @77°F(25°C).
**C10: 10 hour rate to 1.80Vpc @77°F(25°C).

■ Front Terminal Batteries LPF & LPFG Series - AGM & GEL Batteries

Features & Benefits

- Capacity 40 to 190AH
- Virgin lead is used to make plates and paste alloy for long life.
- Copper alloy terminal insert for low resistance
- Easy access to front terminals, speeds voltage & ohmic readings
- Solid ABS jar & covers (UL94V-0 Flame Retardant available)
- Strong gravity casted grids for long life
- Designed for Critical Telecom Application -10 to 12 yr design life
- 100% initial capacity, & streamlined designed speeds installation
- UL Recognized, IEC60896-21 22 Certified, & IATA Approved for Air Freight



Specifications

Model Number	Nominal Voltage (V)	8 HR to 1.75 VPC (AH) at 25C (77F)	Capacity* (Ah) C10	DIMENSION						Weight		Terminal Post
				Length		Width		Height		lbs	kg	
Front Terminal AGM Batteries												
LPF12-40	12	40.5	41.5	10.9	277	4.17	106	8.74	222	34.2	15.5	M6 Insert
LPF12-50	12	48.9	50.0	15.3	390	4.17	105	7.87	200	40.4	18.3	M6 w/FTA
LPF12-55	12	53.6	55.0	10.9	277	4.17	106	8.74	222	38.2	17.3	M6 Insert
LPF12-70	12	68.2	70.0	22.2	564	4.49	114	7.36	187	56.3	25.5	M6 Insert
LPF12-75	12	73.1	75.0	22.2	564	4.49	114	7.36	187	57.4	26.0	M6 Insert
LPF12-90	12	91.2	94.4	20.0	508	4.33	110	9.39	238.5	70.6	32.0	T13 (M6 Insert)
LPF12-100	12	91.2	94.4	15.5	394	4.33	110	11.2	285	71.9	32.6	M6 w/FTA
LPF12-100A	12	95.2	100.0	20.0	508	4.33	110	9.39	238.5	77.2	35.0	T13 (M6 Insert)
LPF12-100H	12	96.8	100.0	15.5	394	4.33	110	11.2	285	76.1	34.5	M6 Insert
LPF12-125	12	120.8	125.0	21.7	551	4.33	110	11.3	287	91.5	41.5	M6 Insert
LPF12-150	12	146.4	150.0	21.7	551	4.33	110	11.3	287	109.1	46.0	M6 w/FTA
LPF12-150B	12	150.0	155.7	21.5	545	4.33	110	11.34	288	101.4	46.0	T13 (M6 Insert)
LPF12-150V	12	146.4	150.0	21.7	550	4.92	125	11.08	281.5	111.5	50.6	M6 w/FTA
LPF12-165	12	164.0	170.0	22.0	560	4.96	126	11	280	119.1	54.0	T13 (M6 Insert)
LPF12-190	12	192.0	200.0	22	560	4.96	126	12.59	320	132.36	60	M8 w/FTA
Front Terminal GEL Batteries												
LPFG12-85H	12	86.4	90	15.51	394	4.33	110	11.22	285	73.2	33.2	M6 Insert
LPFG12-130	12	129.6	135	21.69	551	4.33	110	11.3	287	102.5	47.4	M6 Insert
LPFG12-180	12	141.6	164.5	22	550	4.33	126	11.02	280	114	51.7	T13 - Insert

* C8 - hour rate to 1.75Vpc @77°F(25°C), C10 - hour rate to 1.80Vpc @77°F(25°C).

■ Small LPL Series - AGM Batteries

Features & Benefits

- Capacity 4 to 41 AH
- Virgin lead is used to make plates and paste alloy for long life.
- Copper alloy terminal insert for low resistance
- Solid ABS jar & covers (UL94V-0 Flame Retardant available)
- Strong gravity casted grids for long life
- Designed for Critical Telecom Application - 5 to 7 yr design life
- UL Recognized, IEC60896-21 22 Certified, & IATA Approved for Air Freight
- 100% initial capacity



Mono-Block Battery Solutions
VRLA (Value Regulated Lead Acid) - AGM (Absorbed Glass Mat)

Specifications

Model Number	Nominal Voltage (V)	Amps to 1.75 end VPC			AH Rate	Length		Width		Height		Weight	
		3 Hr.A	5 Hr.A	8 Hr.A		8 Hr AH	inches	mm	inches	mm	inches	mm	lbs
LPL12-4.5	12	1.18	0.78	0.54	4.30	5.94	151	2.09	53	3.90	99	4.19	1.90
LPL12-7.0	12	1.84	1.21	0.84	6.72	5.94	151	2.56	65	3.90	99	5.40	2.45
LPL12-12	12	3.16	2.08	1.43	11.4	5.94	151	3.86	98	3.98	101	8.49	3.85
LPL12-18	12	4.74	3.12	2.15	17.2	7.15	181.5	3.03	77	6.59	168	12.57	5.70
LPL12-24H	12	6.32	4.16	2.86	22.9	6.46	164	4.92	125	6.89	175	18.63	8.45
LPL12-24	12	6.32	4.16	2.86	22.9	6.54	166	6.89	175	4.92	125	17.20	7.80
LPL12-26	12	6.85	4.51	3.10	24.8	6.54	166	6.89	175	4.92	125	18.52	8.40
LPL12-28H	12	7.37	4.86	3.34	26.7	6.46	164	4.92	125	6.89	175	20.07	9.10
LPL12-28	12	7.37	4.86	3.34	26.7	6.54	166	6.89	175	4.92	125	18.96	8.60
LPL6-100	6	9.88	6.61	4.66	37.3	7.68	195	6.69	170	8.37	213	36.38	16.5
LPL12-38	12	10.9	7.31	5.15	41.2	7.76	197	6.50	165	6.69	170	29.11	13.2

■ Large Mono-Block LPL Series - AGM Batteries

Features & Benefits

- Capacity 58 to 246 AH
- Virgin lead is used to make plates and paste alloy for long life.
- Solid ABS jar & covers (UL94V-0 Flame Retardant available)
- Copper alloy terminal insert for low resistance
- Strong gravity casted grids for long life
- Designed for Critical Telecom Application - 10 yr design life
- UL Recognized, IEC60896-21 22 Certified, & IATA Approved for Air Freight
- 100% initial capacity



Specifications

Model Number	Nominal Voltage (V)	Amps to 1.75 end VPC			AH Rate	Length		Width		Height		Weight	
		3 Hr.A	5 Hr.A	8 Hr.A		8 Hr AH	inches	mm	inches	mm	inches	mm	lbs
LPL12-60	12	15.6	10.4	7.36	58.9	10.24	260	6.61	168	8.50	216	44.10	20.7
LPL12-65	12	16.9	11.3	7.97	63.8	13.70	348	6.57	167	7.01	178	46.75	21.2
LPL12-75	12	19.5	13.1	9.20	73.6	10.24	260	6.61	168	8.43	214	50.05	22.7
LPL12-90H	12	23.4	15.7	11.0	88.0	12.05	306	6.61	168	9.06	230	59.76	27.1
LPL12-100	12	26.0	17.4	12.3	98.4	12.99	330	6.81	173	8.66	220	70.56	32.0
LPL12-120	12	31.2	20.9	14.7	117.6	16.06	408	6.97	177	8.86	225	80.70	36.6
LPL12-140	12	36.4	24.4	17.2	137.6	13.58	345	6.77	172	11.02	280	100.33	45.5
LPL12-150	12	39.0	26.1	18.4	147.2	19.02	483	6.69	170	9.39	239	104.08	47.2
LPL12-200	12	52.0	34.8	24.5	196.0	20.55	522	9.45	240	8.82	224	141.12	64.0
LPL12-250	12	65.0	43.5	30.7	245.6	20.55	522	10.55	268	8.90	226	163.17	74.0

■ LPL Series - Single Cell AGM Batteries

Features & Benefits

- Capacity 98 AH to 2892 AH at 8 hr rate
- Virgin lead is used to make plates and paste alloy for long life.
- Copper alloy terminal insert for low resistance
- Solid ABS jar & covers (UL94V-0 Flame Retardant available)
- Strong gravity casted grids for long life
- Designed for Critical Telecom Application - 15 yr design life
- UL Recognized, IEC60896-21 22 Certified, & IATA Approved for Air Freight
- 100% initial capacity



Single-cell Jar Battery Solutions
VRLA (Value Regulated Lead Acid)

Specifications

Model Number	Nominal Voltage (V)	Amps to 1.75 end VPC			AH Rate	Length		Width		Height		Weight	
		3 Hr.A	5 Hr.A	8 Hr.A		8 Hr AH	inches	mm	inches	mm	inches	mm	lbs
LPL2-100	2	25.7	17.7	12.3	98.4	6.69	170	2.83	72	8.3	214	13.01	5.8
LPL2-150	2	38.6	26.6	18.4	147.2	6.69	170	3.86	98	8.3	214	18.74	8.4
LPL2-200	2	51.5	35.5	24.6	196.8	6.69	170	4.33	110	13.8	350	30.21	13.7
LPL2-250	2	64.3	44.4	30.7	245.6	6.69	170	4.33	110	13.8	350	31.97	14.5
LPL2-300	2	77.2	53.2	36.9	295.2	6.69	170	5.91	150	13.8	350	41.45	18.8
LPL2-400	2	102.9	71.0	49.2	393.6	8.27	210	6.89	175	13.8	350	56.23	25.5
LPL2-500	2	154.4	106.5	73.7	589.6	9.45	240	6.89	175	13.7	348	67.25	30.5
LPL2-600	2	205.9	142.0	98.3	786.4	11.8	300	6.89	175	13.8	350	84.2	36.6
LPL2-800	2	257.3	177.5	122.9	983.2	16.1	410	6.89	175	13.8	350	111.13	50.4
LPL2-1000	2	308.8	213.0	147.5	1180.0	18.7	475	6.89	175	13.8	350	132.30	60.0
LPL2-1200	2	386.0	266.2	184.3	1474.4	18.70	475	6.89	175	13.8	350	146.41	66.4
LPL2-2000	2	643.3	443.7	307.2	2457.6	19.29	490	13.78	350	13.7	349	280.04	127.0
LPL2-3000	2	747.0	516.5	361.5	2892.0	27.9	709	13.78	350	13.7	347	396.90	180.0

■ Mono-Block LPG Series - GEL Batteries for outside plant and CATV applications

Features & Benefits

- Capacity 56 to 210 AH
- Virgin lead is used to make plates and paste alloy for long life.
- Wider Operating Temperature: -4°F to 131°F (-20°C to 55°C)
- Copper alloy terminal insert for low resistance
- Solid ABS jar & covers (UL94V-0 Flame Retardant available)
- Strong gravity casted grids for long life
- Designed for Critical Telecom Application - 11 yr design life
- UL Recognized, IEC60896-21 22 Certified, & IATA Approved for Air Freight
- 100% initial capacity



Specifications

Model Number	Nominal Voltage (V)	Amps to 1.75 end VPC			AH Rate	Length		Width		Height		Weight	
		3 Hr.A	5 Hr.A	8 Hr.A		8 Hr AH	inches	mm	inches	mm	inches	mm	lbs
LPG12-65	12	15.1	10.4	7.10	56.8	12.80	325	6.57	167	6.85	174	52.9	24.0
LPG12-70H	12	16.2	11.2	7.65	61.2	10.24	260	6.61	168	8.43	214	50.3	22.8
LPG12-85	12	19.7	13.6	9.29	74.3	12.05	306	6.61	168	8.43	214	58.4	26.5
LPG12-100	12	23.2	16.0	10.6	84.8	12.99	330	6.81	173	8.58	218	67.9	30.8
LPG12-110	12	25.5	17.6	12.0	96.0	16.06	408	6.97	177	8.86	225	78.7	35.7
LPG12-125	12	30.2	20.8	14.2	113.6	13.58	345	6.77	172	11.0	280	104.3	47.3
LPG12-140	12	31.3	21.6	14.7	117.6	19.02	483	6.69	170	9.45	240	96.8	43.9
LPG12-200	12	46.4	32.0	21.9	175.2	20.55	522	9.45	240	8.82	224	137.8	62.5
LPG12-240	12	55.7	38.4	26.2	209.6	20.55	522	10.6	268	8.90	226	170.9	77.5
LPG6-200	6	46.4	32.0	21.9	175.2	12.68	322	7.01	178	9.21	232	68.6	31.1

■ OPzS Series - Flooded Tubular Batteries

Features & Benefits

- Capacity 50 AH to 3056 AH at 8 hr rate
- Virgin lead is used to make plates and paste alloy for long life.
- Copper alloy terminal insert for low resistance
- Wider Operating Temperature: -4°F to 131°F (-20°C to 55°C)
- Higher cycle life than flat plate batteries
- SAN transparent container, (Optional PC flame retardant material to UL94V-0).
- Small footprint and easily installed on standard or seismic racks
- Designed for Critical Telecom Application up to 20 yr design life
- Standard 1.240 Specific Gravity, with optional 1.215 SG
- IEC60896-11 Certified
- 100% initial capacity



Flooded Tubular Battery Solutions

Specifications

Model	Nominal Voltage (V)	Amp Capacity Rate to 1.75 Vpc @25°C			Capacity C8 @25°C (AH)	DIMENSION						Weight	
		3 Hr.A	5 Hr.A	8 Hr.A		Length		Width		Height		lbs	kg
						inches	mm	inches	mm	inches	mm		
6V / 12V Batteries													
12V 1 OPzS50	12	12.3	8.5	6.2	50	10.7	272	8.07	205	15.12	384	86.0	39.0
12V 2 OPzS100	12	24.4	17.0	12.5	100	10.7	272	8.07	205	15.12	384	107.4	48.7
12V 3 OPzS150	12	36.7	25.5	18.6	149	15.0	381	8.07	205	15.12	384	148.6	67.4
6V 4 OPzS200	6	48.9	34.0	24.8	198	10.7	272	8.07	205	15.12	384	101.4	46.0
6V 5 OPzS250	6	61.2	42.5	31.0	248	15.0	381	8.07	205	15.12	384	132.3	59.0
6V 6 OPzS300	6	73.3	51.1	37.3	298	15.0	381	8.07	205	15.12	384	144.4	65.5
2V Single Cell Flooded Batteries													
2OPzS100	2	26.7	18.3	12.8	102	4.06	103	8.11	206	16.14	410	29.1	13.2
3OPzS150	2	40.1	27.4	19.1	153	4.06	103	8.11	206	16.14	410	33.7	15.3
4 OPzS200	2	53.5	36.6	25.4	203	4.06	103	8.11	206	16.14	410	38.4	17.4
5 OPzS250	2	66.9	45.7	31.8	254	4.88	124	8.11	206	16.14	410	45.0	20.4
6 OPzS300	2	80.2	54.9	38.2	306	5.71	145	8.11	206	16.14	410	54.0	24.5
5 OPzS350	2	93.6	64.1	44.5	356	4.88	124	8.11	206	20.71	526	62.4	28.3
6 OPzS420	2	112	76.8	53.5	428	5.71	145	8.11	206	20.71	526	72.1	32.7
7 OPzS490	2	131	89.6	62.3	498	6.54	166	8.11	206	20.71	526	83.8	38.0
6 OPzS600	2	160	110	76.3	610	5.71	145	8.11	206	27.6	701	100.1	45.4
8 OPzS800	2	214	146	102	816	7.52	191	8.27	210	27.6	701	138.7	62.9
10 OPzS1000	2	267	183	128	1024	9.17	233	8.27	210	27.6	701	170.6	77.4
12 OPzS1200	2	320	219	152	1216	10.83	275	8.27	210	27.6	701	202.2	91.7
12 OPzS1500	2	401	274	191	1528	10.83	275	8.27	210	33.5	851	250.9	113.8
16 OPzS2000	2	535	366	254	2032	15.71	399	8.43	214	32.56	827	330.7	150.0
20 OPzS2500	2	669	457	318	2544	19.17	487	8.35	212	32.56	827	417.6	189.4
24 OPzS3000	2	802	549	382	3056	22.68	576	8.35	212	32.56	827	495.6	224.8

■ OPzV Series - Tubular GEL Batteries

Features & Benefits

- Capacity 43AH to 3190 AH to 8 hr rate
- Virgin lead is used to make plates and paste alloy for long life.
- Copper alloy terminal insert for low resistance
- Wider Operating Temperature: -4°F to 131°F (-20°C to 55°C)
- Higher cycle life than flat plate batteries
- Solid ABS jars & covers (UL94V-0 Flame Retardant available)
- Easy installation vertical or horizontal seismic modular racks
- Designed for Critical Telecom Application up to 20 yr design life
- UL Recognized, IEC60896-21 22 Certified, & IATA Approved for Air Freight
- 100% initial capacity



Specifications

Model	Nominal Voltage (V)	Amp Capacity Rate to 1.75 Vpc @25°C			Capacity C8 @25°C (AH)	DIMENSION						Weight	
		3 Hr.A	5 Hr.A	8 Hr.A		Length		Width		Height		lbs	kg
						inches	mm	inches	mm	inches	mm		
12V Front Terminal Batteries													
12V 3 OPzV100FT	12	26.5	18.4	13.1	104.8	21.7	551	4.33	110	11.3	287	87.5	39.7
12V 3 OPzV120FT	12	31.8	22.2	15.8	126.4	21.7	551	4.33	110	11.3	287	93.3	42.3
12V 4 OPzV150FT	12	39.8	27.6	20.4	163.2	21.6	549.5	4.90	124.5	12.4	315	114.0	51.7
12V Batteries													
12V2OPzV45	12	11.4	7.9	5.4	43.2	10.2	260	6.61	168	8.2	208	43.0	19.5
12V3OPzV60	12	16.3	11.3	7.8	62.7	10.2	260	6.61	168	8.2	229	52.3	23.7
12V4OPzV80	12	21.2	14.7	10.5	84.0	13.0	330	6.81	173	8.3	212	67.9	30.8
12V5OPzV100	12	26.5	18.4	13.1	104.8	16.1	408	6.97	177	8.9	225	84.5	38.3
12V6OPzV120	12	31.7	22.2	15.6	124.8	19.0	483	6.69	170	9.4	238.5	100.8	45.7
12V7OPzV140	12	37.1	25.8	18.2	145.6	20.9	532	8.15	207	8.4	214	119.1	54
12V8OPzV160	12	42.3	29.5	20.9	167.2	20.9	532	8.15	207	8.4	214	130.8	59.3
12V9OPzV180	12	47.7	33.2	23.5	188.0	20.6	522	9.45	240	8.6	218	148.6	67.4
12V10OPzV200	12	54.5	36.9	26.1	208.8	20.6	522	10.55	268	8.7	220	167.4	75.9
2V Single Cell Batteries													
4OPzV200	2	54.5	36.9	27.1	217	4.06	103	8.11	206	13.98	355	41.5	18.8
5OPzV250	2	68.1	46.0	33.9	271	4.88	124	8.11	206	13.98	355	50.9	23.1
6OPzV300	2	81.8	55.2	40.7	326	5.71	145	8.11	206	13.98	355	59.8	27.1
5OPzV350	2	94.6	64.1	47.2	378	4.88	124	8.11	206	18.54	471	63.9	29.0
6OPzV420	2	113.4	76.8	56.7	454	5.71	145	8.11	206	18.54	471	76.1	34.5
7OPzV490	2	132.3	89.6	66.1	529	6.54	166	8.11	206	18.54	471	86.0	39.0
6OPzV600	2	159.6	109.2	80.3	642	5.71	145	8.11	206	25.43	646	101.4	46.0
8OPzV800	2	213.2	144.9	107.1	857	7.52	191	8.27	210	25.43	646	143.5	65.1
10OPzV1000	2	266.7	181.7	133.3	1066	9.17	233	8.27	210	25.43	646	173.1	78.5
12OPzV1200	2	320.3	217.4	160.2	1282	10.83	275	8.27	210	25.43	646	205.1	93.0
12OPzV1500	2	395.9	269.9	199.4	1595	10.83	275	8.27	210	31.34	796	253.6	115.0
16OPzV2000	2	527.1	359.1	265.4	2123	15.71	399	8.27	214	30.39	772	341.8	155.0
20OPzV2500	2	659.4	449.4	332.6	2661	19.17	487	8.35	212	30.39	772	432.2	196.0
24OPzV3000	2	791.7	538.7	398.7	3190	22.68	576	8.35	212	30.39	772	511.6	232.0

■ LHT Series - Temperature Tolerant Special AGM Battery Design

Features & Benefits

- Capacity 50 to 2928 AH at 8 hr rate
- Virgin lead is used to make plates and paste alloy for long life.
- Copper alloy terminal insert for low resistance
- Extreme Temperature jar to cover epoxy, with double seal design
- Strong ABS/PC containers, w/extreme temperature additive
- Flame Retardant jar & cover to UL94V-0 & >28%LOI
- Special high-temperature paste, grid alloy, separator, & electrolyte
- Operating Temperature: -40°F to 149°F (-40°C to 65°C)
- Design Life up to 10 years at 95°F (35°C)
- UL Recognized, IEC60896-21 22 Certified, & IATA Approved for Air Freight
- 100% initial capacity



Temperature Tolerant Battery Design in Single-cell Jars
AGM Special Design

Specifications

Model Number	Nominal Voltage (V)	Capacity (AH) at 95°F (35°C)					DIMENSION			Weight (lbs)	Terminal
		C20 1.80Vpc	C10 1.80Vpc	C8 1.75Vpc	C3 1.75Vpc	C1 1.67Vpc	Length (inch)	Width (inch)	Height (inch)		
12V Front Terminal Batteries											
LHTF12-100	12	104	100	98	79.5	64.0	15.5	4.3	11.3	69.5	T6
LHTF12-150	12	159	150	146	119.4	96.0	21.7	4.3	11.3	101.4	T6
LHTF12-200	12	210	200	195	159.0	128.0	22.0	5.0	12.6	131.2	T11
12V Top Terminal Batteries											
LHT12-50	12	54	50	48	38.7	30.7	12.8	6.6	6.9	43.2	T6
LHT12-65	12	70	65	64	50.7	39.2	10.2	6.6	8.2	49.2	T6
LHT12-80	12	86	80	78	62.4	48.2	12.0	6.6	8.2	61.7	T6
LHT12-100	12	107	100	98	78.0	60.2	13.0	6.8	8.3	73.9	T11
LHT12-150	12	156	150	143	117.0	88.3	20.9	8.1	8.4	123.5	T11
LHT12-200	12	214	200	196	156.0	120.0	20.6	9.4	8.6	148.6	T11
2V Top Terminal Batteries											
LHT2-200	2	212	200	195	159.0	123	6.7	4.3	12.9	33.3	T11
LHT2-300	2	318	300	293	238.5	185	6.7	5.9	13.0	45.4	T11
LHT2-400	2	424	400	390	318.0	246	8.3	6.9	13.0	64.4	T11
LHT2-500	2	530	500	488	397.5	308	9.4	6.9	12.9	76.3	T11
LHT2-600	2	646	600	586	477.0	369	11.8	6.9	13.0	93.3	T11
LHT2-800	2	848	800	781	636.0	492	16.1	6.9	13.0	128.8	T11
LHT2-1000	2	1060	1000	976	795.0	615	18.7	6.9	12.9	153.2	T11
LHT2-1500	2	1575	1500	1464	1192.5	923	15.9	13.9	13.3	241.4	T11
LHT2-2000	2	2100	2000	1952	1590.0	1230	19.3	13.8	13.3	304.7	T11
LHT2-3000	2	3150	3000	2928	2385.0	1845	27.9	13.8	13.3	455.1	T11

■ LFeLi Series - Lithium Iron Phosphate

Features & Benefits

- Complete with Battery Management System built-in
- Protected for over-charge, over-discharge & over-temperature
- Flame retardant system to UL94V-0 & >28% LOI
- Easy installation, 19-inch standard cabinet or wall-mounted
- High cycle times and long service life
- 23" Relay Rack mounting hangers available



Safe Lithium Iron Phosphate Technology
High energy density and conversion efficiency

Model	Nominal Voltage (V)	Rated Capacity (Ah)	DIMENSION***						Weight		
			Width		Depth		Height		kg	lbs	
			mm	inch	mm	inch	mm	inch	Rack Unit		
Standard Model											
LFeLi-4810	51.2	10	442	17.40	330	12.99	44	1.7	1U	9.5	20.9
LFeLi-4820	51.2	20	442	17.40	330	12.99	88	3.5	2U	14	30.9
LFeLi-4830	51.2	30	436	17.17	400	15.75	132.5	5.2	3U	20	44.1
LFeLi-4840	51.2	40	436	17.17	400	15.75	132.5	5.2	3U	25	55.1
LFeLi-4850	51.2	50	436	17.17	400	15.75	132.5	5.2	3U	28	61.7
LFeLi-4860	51.2	60	436	17.17	400	15.75	132.5	5.2	3U	33	72.8
LFeLi-4880	51.2	80	436	17.17	420	16.54	220	8.7	5U	39	86.0
LFeLi-48100	51.2	100	436	17.17	420	16.54	220	8.7	5U	49	108.0
Model C - High performance model*											
LFeLi-4850C	48.0	50	443	17.44	441.5	17.38	132	5.2	3U	32	70.5
LFeLi-4875C	48.0	75	440	17.32	401.5	15.81	177.5	7.0	4U	42	92.6
LFeLi-48100C	48.0	100	442	17.40	395	15.55	222	8.7	5U	62	136.7
Model D - Smaller depth model**											
LFeLi-4850D	51.2	50	436	17.17	350	13.78	132.5	5.2	3U	26	57.3
LFeLi-48100D	51.2	100	436	17.17	350	13.78	221.5	8.7	5U	48	105.8

* Model C is high performance model, gets 5000 cycles to 80%DOD, and > 3500 cycles to 100% DOD.

** Model D is smaller depth of standard model.

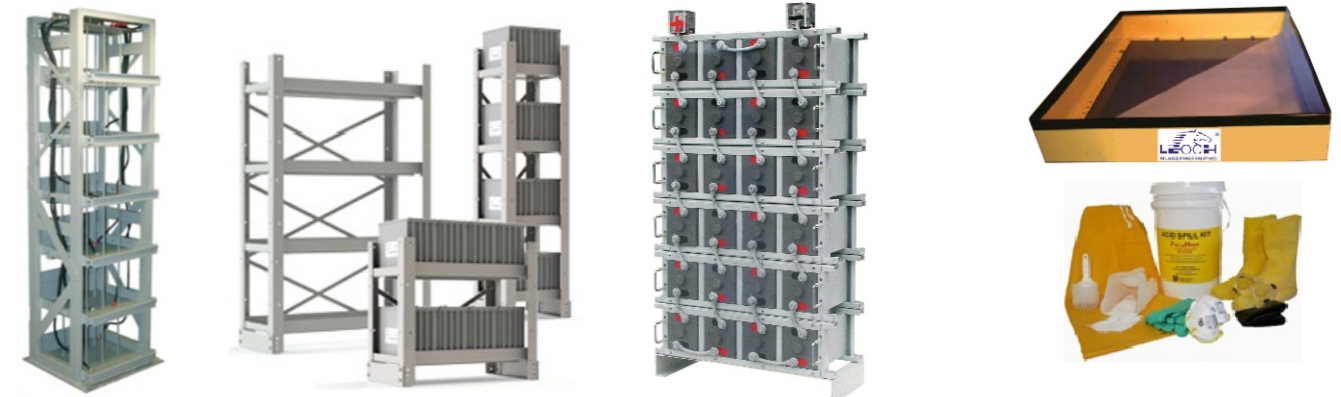
*** Dimension of battery enclosure, excluding the handles.

LCD Option: every model rated ≥30AH have LCD screen option available. A = Without LCD Display, B = With LCD Display.

Parallel Option: every model rated ≥30AH can be installed with up to 16 modules in parallel to increase system capacity.

■ Relay Racks, Cabinets, & Conventional Seismic Racks

- Special Standard, Seismic and NEBS Relay Racks
- Tiered and Step racks to meet your requirements



Racks & Cabinets specially designed to fit in tight spaces, for the Critical Telecom industry

Spill Containment and Safety Equipment are always readily available